

Retail Space For Lease

Shoppes At Inverrary

5501-5599 W. Oakland Park Blvd, Lauderhill, FL 33313

AVAILABLE FOR LEASE
2400 SF.

Anchor Tenants

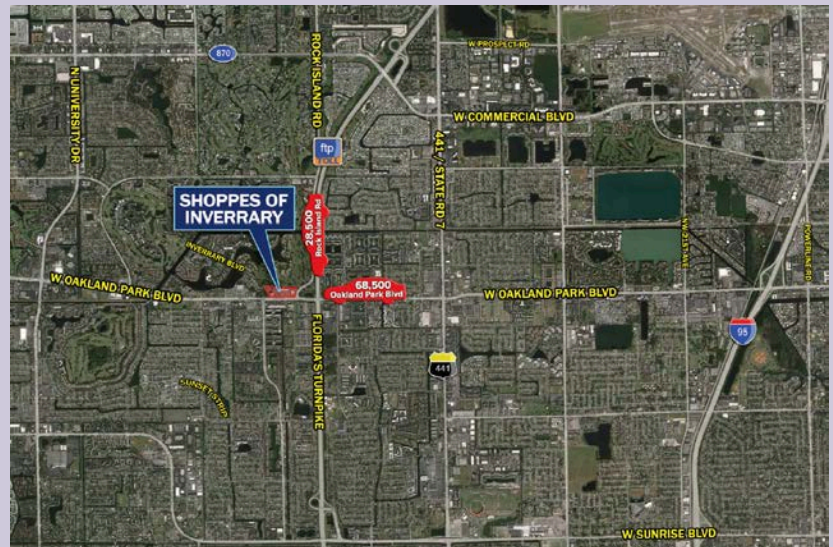


HIGHLIGHTS

- Adjacent to the Lauderhill City Hall.
- Approximately 600 visitors per week
- Pylon sign available
- High traffic count

LOCATION

- Situated on Oakland Park Blvd at the main entrance to Inverrary Country Club
- Excellent accessibility & visibility
- Main entrance with a traffic light



TRAFFIC COUNTS

THOROUGHFARE
OAKLAND PARK BLVD.
ROCK ISLAND RD.

CARS PER DAY
68,500
28,500



EQUITY GROUP

For additional information please contact Hector Gutierrez:
305.527.7170 or Hector.Gutierrez@imcequitygroup.com